

DRUMQUIK PRO / DRUMQUIK PUR



DrumQuik Dispensing Systems for Safer Chemical Management

Whether you're dispensing edible oils, condiments, detergents, specialty automotive fluids, or industrial chemicals, acids, caustics or solvents, DrumQuik PRO and the high purity DrumQuik PUR can make your process cleaner, faster, safer and smarter.

- Provide the critical connection between your chemical container and the end use process
- Create a closed transfer system to protect workers and keep a cleaner work environment

DrumQuik solutions are available for a variety of container types providing interchangeable, reusable connections for:

- Plastic or steel drums
- Chemical packs
- IBCs or totes

Note: For high purity applications DrumQuik PUR provides the assurance of compatibility with chemicals used in semiconductor and flat panel production, pharmaceutical and photovoltaic or solar cell manufacturing.

DrumQuik® PRO and DrumQuik PUR dispensing systems are used with common pumps to create a closed transfer system for both general and high purity chemicals. These easy-to-use products meet the strict safety requirements of chemical handling applications as well as the demands of harsh operating environments. DrumQuik dispensing systems minimize chemical exposure and facilitate the delivery of chemicals from bulk transfer containers to end use applications.

For general chemical dispensing, DrumQuik PRO offers a rugged and cost-effective solution. DrumQuik PUR is a 100% metal-free, cleanroom packaged, PVDF product designed specifically for applications demanding the highest level of purity. All materials are compliant with FDA standards for food and consumables applications.

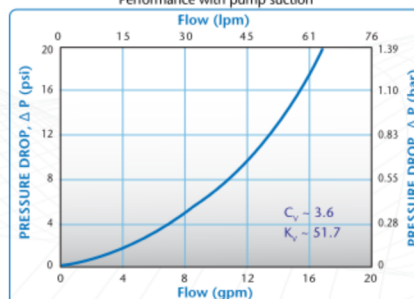
The DrumQuik PRO dispensing system has been UN/DOT certified with many common drums and IBCs for use with hazardous chemicals per 49 CFR 173 and German BAM 11027.

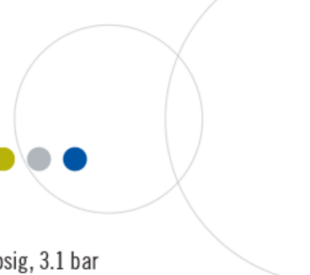
Made from virgin materials compliant with FDA and ROHS standards.



This graph characterizes the flow of the DrumQuik PRO with the coupler vent port open to the atmosphere and a pump drawing liquid out.

DrumQuik PRO & DrumQuik PUR Water Flow
Performance with pump suction





Specifications ● ● ●

PRESSURE:

Uncoupled: Vacuum to 45 psig, 3.1 bar
Coupled: Vacuum to drum rating

TEMPERATURE:

Drum insert: -20°F to 120°F (-20°C to 49°C)
Coupler: HDPE, 32°F to 120°F (0°C to 49°C)
 PVDF, 0°F to 120°F (-18°C to 49°C)

MATERIALS:

Drum insert & dip-tube:
 Virgin polyethylene (HDPE)

Shipping plug:
 Virgin polyethylene (HDPE)

Coupler:
 Virgin polypropylene (DrumQuik PRO)
 Virgin PVDF (DrumQuik PUR)

Spring (coupler only):
 316 stainless steel, Hastelloy® C, virgin PEEK
 UHP, PPS or PTFE encapsulated 316 stainless steel (TESS)

Seals:
Coupler seals: EPDM, FKM, Simriz® UHP
 FFKM Perfluoroelastomer

Bung seal: Polyolefin, EPDM, FKM

Shipping plug seal: EPDM, FKM

Torque specifications:
 2" Buttress - 20ft-lbs (27 N-m)
 BCS 56x4 - 20ft-lbs (27 N-m)
 BCS 70mm - 22ft-lbs (30 N-m)
 2" NPS (plastic drum) - 20ft-lbs (27 N-m)
 2" NPS (steel drum) - 15ft-lbs (20 N-m)
 Shipping plug - 15inch-lbs (1.7 N-m)

NOTE: The torque specifications listed above are general recommendations which may need to be adjusted + or - depending on specific application.



DrumQuik® PRO and DrumQuik PUR are changing the world of chemical management with their unique closed-system design. Innovative DrumQuik systems help companies reduce costs, increase worker safety and protect the environment. From basic chemical handling to specialty high purity and pharmaceutical applications, DrumQuik dispensing systems make chemical management cleaner, faster, safer and smarter.

DrumQuik PRO

FEATURES

FEATURES	BENEFITS
Quick connect/disconnect	Allows faster drum change-outs
Automatic shutoff valve	Stops flow when disconnected
Disposable drum insert	Reduces messy handling and chemical exposure
Ported vent system for vapor management	Allows make-up air into drum or connection of blanket gas (N ₂ , CO ₂)
Multiple standard thread sizes	Can be used with many common steel and plastic containers

DrumQuik PUR

FEATURES

FEATURES	BENEFITS
Quick connect/disconnect	Allows faster drum change-outs
All plastic construction	No metallic corrosion/contamination
Automatic shutoff valve	Stops flow when disconnected
Cleanroom manufactured	Assures high level of purity
Disposable drum insert	Minimizes chemical exposure & contamination

Couplers • POLYPROPYLENE

DRUMQUIK PRO	PART NUMBER	DESCRIPTION
	DQPRO120312	3/4" Hose barb (EPDM seals, 316 SST spring)
	DQPRO120208	1/2" Male NPT (EPDM seals, 316 SST spring)
	DQPRO120208202	1/2" Male NPT (FKM seals, 316 SS1 spring)
	DQPRO120208206	1/2" Male NPT (EPDM seals, Hastelloy C spring)
	DQPRO120208207	1/2" Male NPT (FKM seals, Hastelloy C spring)
	DQPRO120712	3/4" Male BSPP (EPDM seals, 316 SST spring)
	DQPRO120712202	3/4" Male BSPP (FKM seals, 316 SS1 spring)
	DQPRO120712206	3/4" Male BSPP (EPDM seals, Hastelloy C spring)
	DQPRO120712207	3/4" Male BSPP (FKM seals, Hastelloy C spring)

Couplers • PVDF (3/4" FLARE TERMINATION)

DRUMQUIK PUR	PART NUMBER	DESCRIPTION
	DQPUR120112	FKM liquid contact seals, FKM vent seal, PEEK plastic spring
	DQPUR120112203	Simriz® FFKM liquid contact seals, FKM vent seal, PEEK plastic spring
	DQPUR120112208	FKM liquid contact seals, FKM vent seal, PPS plastic spring
	DQPUR120112209	Simriz FFKM liquid contact seals, FKM vent seal, PPS plastic spring
	DQPUR120112210	FKM liquid contact seals, FKM vent seal, PTFE encapsulated 316 stainless steel (TESS) spring
	DQPUR120112211	Simriz FFKM liquid contact seals, FKM vent seal, PTFE encapsulated 316 stainless steel (TESS) spring

Drum Inserts • POLYETHYLENE (HDPE)

DRUMQUIK PRO & DRUMQUIK PUR	PART NUMBER	DESCRIPTION
	DQPRO20BCS70	70mm thread, EPDM seals (70x6 and 70x5 plastic drums)
	DQPRO20BCS/0202	70mm thread, FKM seals (70x6 and 70x5 plastic drums)
	DQPRO202BUT	2" American buttress thread, EPDM seals (No. Am. Plastic drums)
	DQPRO202BUT202	2" American buttress thread, FKM seals (No. Am. Plastic drums)
	DQPRO2056X4	BCS 56x4 thread, EPDM seals (European plastic drums)
	DQPRO2056X4202	BCS 56x4 thread, FKM seals (European plastic drums)
	DQPRO20G2NPSST	2" NPS (ISO G2) thread, EPDM seals (steel drums and IBC caps)
	DQPRO20G2NPSST202	2" NPS (ISO G2) thread, FKM seals (steel drums and IBC caps)
	DQPRO20G2NPSPL	2" NPS (ISO G2) thread, EPDM flat bung seal (plastic drums and IBC caps)
	DQPRO20G2NPSPL202	2" NPS (ISO G2) thread, FKM flat bung seal (plastic drums and IBC caps)
	DQPUR202BUT	2" American buttress thread, Polyolefin (POE) bung seal, EPDM shipping plug seal
	DQPUR202BUT202	2" American buttress thread, Polyolefin (POE) bung seal, FKM shipping plug seal

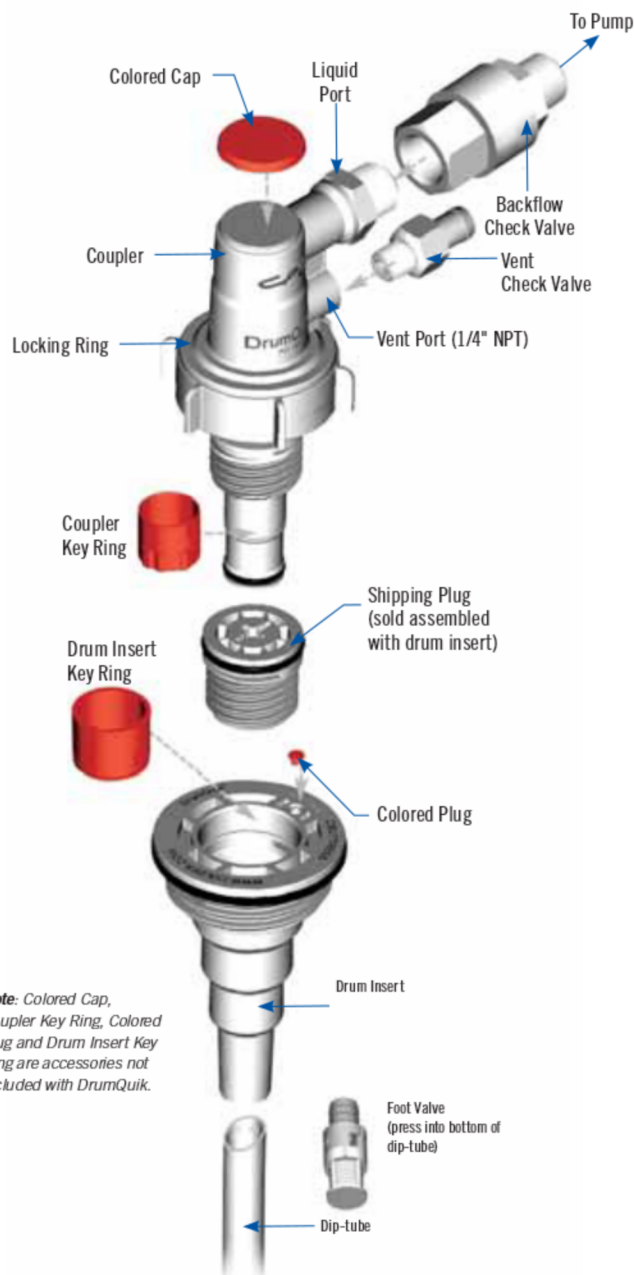
Dip-Tubes • POLYETHYLENE (HDPE)

DRUMQUIK PRO & PUR	PART NUMBER	DESCRIPTION
	DQPRODT0410	13.0" (330mm) long for 5 gal/25L jerry cans
	DQPRODT0985	35.5" (905mm) long for 55 gal/200L drums
	DQPRODT11070	39.0" (990mm) long for 275 gal/1040L IBCs
	DQPRODT1274	47.0" (1194mm) long for 330 gal/1250L IBCs
	DQPURDT0410	13.0" (330mm) long for 5 gal/25L jerry cans
	DQPURDT0985	35.5" (905mm) long for 55 gal/200L drums
	DQPURDT11070	39.0" (990mm) long for 275 gal/1040L IBCs
	DQPURDT1274	47.0" (1194mm) long for 330 gal/1250L IBCs

Assembled Drum Inserts & Dip-Tubes

DRUMQUIK PUR	PART NUMBER	DESCRIPTION
	DQPUR2BUT0410	Drum insert assembly, NAMPAC square jerry can, 20L, 330mm long (from sealing surface)
	DQPUR2BUT0985	Drum insert assembly with universal dip-tube (drum), 905mm long (from sealing surface)
	DQPUR2BUT1070	Drum insert assembly with universal dip-tube (drum), 990mm long (from sealing surface)
	DQPUR2BUT1274	Drum insert assembly with universal dip-tube (IBC), 1194mm long (from sealing surface)

DrumQuik® PRO & PUR Dispensing Connector System



VAPOR MANAGEMENT OPTIONS:

- 1. OPEN:** Vent port left open to atmosphere
- 2. REMOTE:** Vent port routed to fume hood, scrubber or vapor recovery system
- 3. CHECKED:** Connect vent check valve to allow make-up air in without allowing fumes to escape
- 4. BLANKET GAS:** Connect a CPC quick disconnect coupling for blanket gas (N₂, CO₂)
- 5. FILTERED:** Connect vent filter

DRUMQUIK PRO / DRUMQUIK PUR ACCESSORIES

Color Coding and Keying Options

• COLORED KEY KITS FOR PHYSICAL CODING: POLYETHYLENE

DQPRO PART NUMBER	DQPUR PART NUMBER	DESCRIPTION
DQPROKEYCPGRY00	DQPURKEYCPGRY00	Key kit for coupler, gray
DQPROKEYCPRED01	DQPURKEYCPRED01	Key kit for coupler, red
DQPROKEYCPYEL02	DQPURKEYCPYEL02	Key kit for coupler, yellow
DQPROKEYCPGRN03	DQPURKEYCPGRN03	Key kit for coupler, green
DQPROKEYCPBRN04	DQPURKEYCPBRN04	Key kit for coupler, brown
DQPROKEYCPBLU05	DQPURKEYCPBLU05	Key kit for coupler, blue
DQPROKEYCPBLK99	DQPURKEYCPBLK99	Key kit for coupler, black
DQPROKEYCPCOMBO	DQPURKEYCPCOMBO	One of every coupler key ring and cap

Key kits for coupler include coupler key ring and cap.

DQPROKEYDIRED01	DQPURKEYDIRED01	DESCRIPTION
DQPROKEYDIRED01	DQPURKEYDIRED01	Key kit for drum insert, red
DQPROKEYDIYEL02	DQPURKEYDIYEL02	Key kit for drum insert, yellow
DQPROKEYDIGRN03	DQPURKEYDIGRN03	Key kit for drum insert, green
DQPROKEYDIBRN04	DQPURKEYDIBRN04	Key kit for drum insert, brown
DQPROKEYDIBLU05	DQPURKEYDIBLU05	Key kit for drum insert, blue
DQPROKEYDIBLK99	DQPURKEYDIBLK99	Key kit for drum insert, black
DQPROKEYDICOMBO	DQPURKEYDICOMBO	One of every drum insert key ring and button plug

Key kits for drum insert include drum insert key ring and button plug.

Color Coded Parts

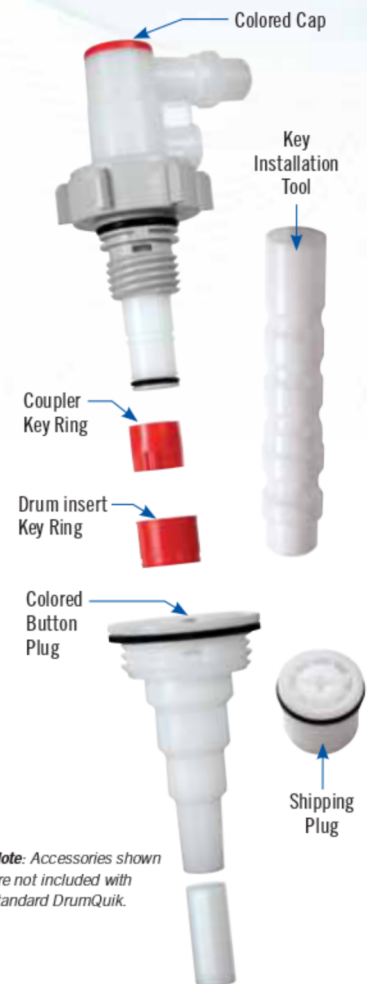
• COLORED CAPS & BUTTON PLUGS FOR VISUAL CODING: POLYETHYLENE

PART NUMBER	DESCRIPTION
DQPROCAPGRY00	Colored cap for coupler, gray
DQPROCAPRED01	Colored cap for coupler, red
DQPROCAPYEL02	Colored cap for coupler, yellow
DQPROCAPGRN03	Colored cap for coupler, green
DQPROCAPBRN04	Colored cap for coupler, brown
DQPROCAPBLU05	Colored cap for coupler, blue
DQPROCAPBLK99	Colored cap for coupler, black
DQPROCAPCOMBO	One each of every color cap

DQPROPLUGGRY00	Colored button plug for drum insert, gray
DQPROPLUGRED01	Colored button plug for drum insert, red
DQPROPLUGYEL02	Colored button plug for drum insert, yellow
DQPROPLUGGRN03	Colored button plug for drum insert, green
DQPROPLUGBRN04	Colored button plug for drum insert, brown
DQPROPLUGBLU05	Colored button plug for drum insert, blue
DQPROPLUGBLK99	Colored button plug for drum insert, black
DQPROPLUGCOMBO	One each of every color plug

Note: Colored caps and button plugs can be used with both DrumQuik PRO and DrumQuik PUR.

DrumQuik® PRO & PUR Key Kits



Color Coding



DRUMQUIK PRO / DRUMQUIK PUR ACCESSORIES

Tools



- 1 Fully press dip-tube into drum insert socket.



- 2 Place the drum insert assembly in drum.



- 3 Turn shipping plug counterclockwise to remove. (Use a large, flat blade or #4 Phillips screwdriver.)



- 4 Insert coupler into drum insert assembly.



- 5 Turn the coupler locking ring clockwise until stop is reached (approximately 2 full turns); valve is opened during this process.

PART NUMBER	DESCRIPTION
2408900	Torque socket tool (blue, glass-filled nylon)
24/9100	Bung wrench (aluminum)
2375600	Key installation tool for key kits (Shipping plug may also be used to install keys)
DQPURFT08	Flaring Tool, 1/2" tubing
DQPURFT12	Flaring Tool, 3/4" tubing

Sample Kits (Includes one coupler, one insert and one dip-tube)

PART NUMBER	DESCRIPTION
DQPRONASAMP	2" Buttress drum insert, 905mm dip-tube, 1/2 NPT coupler (EPDM O-rings, 316 SST spring in coupler)
DQPRONASAMP20/	2" Buttress drum insert, 905mm dip-tube, 1/2 NPT coupler (FKM seals & Hastelloy® C spring in coupler)
DQPROEUSAMP	BSC 56x4 drum insert, 905mm dip-tube, 3/4 BSPP coupler (EPDM seals, 316 SST spring in coupler)
DQPROEUSAMP20/	BSC 56x4 drum insert, 905mm dip-tube, 3/4 BSPP coupler (FKM seals & Hastelloy® C spring in coupler)
DQPRONPSSTSAMP	2" NPS (ISO G2) drum insert, 905mm dip-tube, 1/2 NPT coupler (EPDM Bung O-rings, 316 SST spring in coupler)
DQPRONPSS1SAMP20/	2" NPS (ISO G2) drum insert, 905mm dip-tube, 1/2 NPT coupler (FKM seals & Hastelloy® C spring in coupler)
DQPRONPPLSAMP	2" NPS (ISO G2) drum insert, 905mm dip-tube, 1/2 NPT coupler (EPDM Flat Gasket, 316 SST Spring)
DQPRONPPLSAMP20/	2" NPS (ISO G2) drum insert, 905mm dip-tube, 1/2 NPT coupler (FKM seals & Hastelloy® C spring in coupler)
DQPURSAMP202	Kit includes 1 Coupler (DQPUR 12 0112 (PEEK® & FKM) & 1 assembled Dip-tube (DQPUR 2BUT 0985 202)
DQPURSAMP209	Kit includes 1 Coupler (DQPUR 12 0112 209 (PPS & Simriz®) & 1 Dip-tube assy. (DQPUR 2BUT 0985 202)

Shipping Plugs

PART NUMBER	DESCRIPTION
DQPROPUMPAD	Internal 3/4 NPT Thread pump adaptor shipping plug (HDPE, EPDM)
DQPROPUMPAD202	Internal 3/4 NPT Thread pump adaptor shipping plug (HDPE, FKM)
DQPRPUMPAD202	Extended shipping plug for venting internal pressure from drum (HDPE, EPDM)
DQPROSHPLUGEX	Extended shipping plug for venting internal pressure from drum (HDPE, FKM)
DQPROSHPLUGEX202	Extended shipping plug for venting internal pressure from drum (HDPE, FKM)
2007900	Shipping plug for drum insert (Does not include shipping plug o-ring)
2290100	Shipping plug o-ring, EPDM
2307200	Shipping plug o-ring, FKM
DQPURSP	Shipping Plug with EPDM seal
DQPURSP202	Shipping Plug with FKM seal

Sample Kits (Includes one coupler, one insert and one dip-tube)

PART NUMBER	DESCRIPTION
DQPURDISEALPOE	Drum insert POE bung seal
DQPURDISEALFEP	Drum insert FEP encapsulated silicone bung seal
DQPURCPSEALFKM	Coupler seal kit (2 seals), FKM
DQPURCPSEALSMZ	Coupler seal kit (2 seals), Simriz®
2423400	Coupler o-ring kit, EPDM (Includes 2 o-rings)
2423500	Coupler o-ring kit, FKM (Includes 2 o-rings)
2166000	Drum insert flat gasket, 2" buttress, FDA EPDM
2166100	Drum insert flat gasket, 2" buttress, FKM
2165800	Drum insert o-ring, 2" NPS (ISO G2) EPDM for steel drums
2165900	Drum insert o-ring, 2" NPS (ISO G2) FKM for steel drums
2165800	Drum insert o-ring, BCS 56x4, EPDM (same as ISO G2 for steel)
2165900	Drum insert o-ring, BCS 56x4, FKM (same as ISO G2 for steel)
2525200	Drum insert flat gasket, 2" NPS (ISO G2) EPDM for plastic drums
2525300	Drum insert flat gasket, 2" NPS (ISO G2) FKM for plastic drums
2594900	Replacement Drum Insert Seal, 2" Buttress, FDA
DQPRO70X6AD	70 X 6 Adaptor with EPDM O-Ring
DQPRO70X6AD202	70 X 6 Adaptor with FKM (Viton®) O-Rings

Accessories

PART NUMBER	DESCRIPTION
TETHER/DUST CAP	
DQPUR1E1HER	Tether/Dust Cap for use with DrumQuik PRO shipping plugs and couplers (PVC, Vinyl)

COUPLER VENT PORT OPTIONS

2879800	Vent check valve, 1/2" ID x 1/4" male NPT (316 SST, Santoprene)
2879801	Vent check valve, 1/2" ID x 1/4" male NPT (Hastelloy® C, FKM)
DQPROFIL01	Air filter, coupler vent port, 1/4" male NPT (polypropylene, 70 micron)
APCD24004	Vent coupling insert, 1/4" male NPT (Acetal, 316 SST, Buna-N)
APCD17004SH	Vent coupling body with shroud, 1/4" hose barb (Acetal, 316 SST, Buna-N)
APCD17006SH	Vent coupling body with shroud, 3/8" hose barb (Acetal, 316 SST, Buna-N)
EFC024412	Vent coupling insert, 1/4" male NPT (Polypropylene, 316 SST, EPDM)
EFC017412	Vent coupling body, 1/4" hose barb (Polypropylene, 316 SST, EPDM)
EFC017612	Vent coupling body, 3/8" hose barb (Polypropylene, 316 SST, EPDM)

NOTE: Parts listed above are suggested for use in the vent port, but any 1/4" NPT CPC coupling can be used for blanket gas applications (see page 144)

BACKFLOW PREVENTION OPTIONS • POLYPROPYLENE

2478900	Check valve for couplers, 1/2" female NPT x 1/2" male NPT (EPDM, 302 SST)
2478901	Check valve for couplers, 1/2" female NPT x 1/2" male NPT (FKM, 302 SST)
2478902	Check valve for couplers, 1/2" female NPT x 1/2" male NPT (EPDM, Hastelloy C)
2478903	Check valve for couplers, 1/2" female NPT x 1/2" male NPT (FKM, Hastelloy C)
2479000	Foot valve for dip-tube, 1/2" hose barb (EPDM, 316 SST)
2479001	Foot valve for dip-tube, 1/2" hose barb (FKM, 316 SST)
2479002	Foot valve for dip-tube, 1/2" hose barb (EPDM, Hastelloy C)
2479003	Foot valve for dip-tube, 1/2" hose barb (FKM, Hastelloy C)

NOTE: CPC distributes the above check valves and foot valves. These valves are not produced by CPC and CPC makes no claims or warranty regarding suitability for use in specific applications.

COUPLER LIQUID PORT FITTINGS • POLYPROPYLENE

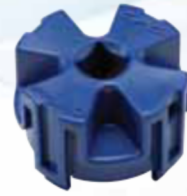
2402600	1/2" female NPT x 3/8" OD compression
2402700	1/2" female NPT x 1/2" OD compression
2402800	1/2" female NPT x 5/8" OD compression
2402900	1/2" female NPT x 3/8" ID hose barb
2403000	1/2" female NPT x 1/2" ID hose barb
2403100	1/2" female NPT x 3/4" ID hose barb

DQPUR ACCESSORY FITTINGS

DQPUR MC0404	Male Connector, PVDF, 1/4" Flare x 1/4" NPT
DQPUR MC0604	Male Connector, PVDF, 3/8" Flare x 1/4" NPT
DQPUR MC0804	Male Connector, PVDF, 1/2" Flare x 1/4" NPT
DQPUR FR1208	Flare Reducer, PFA, 3/4" Female Flare x 1/2" Male Flare
DQPUR FI1216	Flare Increaser, PFA, 3/4" Female Flare x 1" Male Flare
DQPUR TFMC1208	Female flare x male connector, PFA, 3/4" Female Flare x 1/2" Male NPT
DQPUR SE0808	Sweep Elbow, PFA, 1/2" Female Flare x 1/2" Male Flare
DQPUR SE1212	Sweep Elbow, PFA, 3/4" Female Flare x 3/4" Male Flare
DQPURDCPM0812	Double Containment Panel Mount Fitting, PFA, 1/2" process line x 3/4" secondary containment line
DQPURDCPM1216	Double Containment Panel Mount Fitting, PFA, 3/4" process line x 1" secondary containment line
DQPURDCN0812	Double Containment Adapter, PFA, 1/2" process line x 3/4" secondary containment line

Use shipping plug or key installation tool to install keys. Orient ring with lugs down and drum insert key ring with shoulder up.

Torque Tool



Bung Wrench

Refer to specifications for torque requirements (page 143)



Backflow Check and Foot Valves

Prevents liquid from draining back into drum when pump is off



Coupler Liquid Port Fittings



Shipping Plug



Key
Installation
Tool

DRUMQUIK PRO / DRUMQUIK PUR ACCESSORIES



Universal 3-Port Drum Adaptor Kit
(shown with HFC12 and NS4)



DrumQuik® 3-Port UDA Kit • POLYPROPYLENE

The 3-Port UDA features a 3/4" male NPT thread that mates with common containers, bung plugs and caps. The adaptor ports enable simultaneous chemical extraction, venting or application of blanket gas. In addition, the third port can be used to recirculate priming chemical to the container in metering pump applications.

Optional system components including foot valves, air filters and vent check valves are also available. For your convenience, CPC offers a variety of drum adaptor plugs to facilitate easy drum connections. (See plugs and caps on page 149.)

PART NUMBER	DESCRIPTION
DQUA3PKIT	3-port adaptor, EPDM seal, locking nut, 35.5" (905mm) dip-tube, 1/2" x 3/8" & 1/2" x 1/4" reducer bushings and 1/4" & 3/8" NPT plugs
DQUA3PKI1202	3-port adaptor, FKM seal, locking nut, 35.5" (905mm) dip-tube, 1/2" x 3/8" & 1/2" x 1/4" reducer bushings and 1/4" & 3/8" NPT plugs
DQUA3P	3-port adaptor bulk packaged (1/2" female NPT liquid outlet port, 3/8" & 1/4" NPT vent/recirculation ports)
DQUA3PNU1	Locking nut for the 3-port adaptor
2717000	EPDM seal for the 3-port adaptor
2717100	FKM seal for the 3-port adaptor
2621100	Reducer bushing, black polypropylene, 1/2" male NPT x 3/8" female NPT
2621200	Reducer bushing, black polypropylene, 1/2" male NPT x 1/4" female NPT
2621300	Pipe plug, black polypropylene, 1/4" male NPT
2621400	Pipe plug, black polypropylene, 3/8" male NPT

Use with PLC, Non-Spill, EFC and ChemQuik Series couplings.

Note: DrumQuik® UDA 3-Port uses DrumQuik PRO dip-tubes and accessories.

DrumQuik UDA Kit • POLYPROPYLENE

The DrumQuik® UDA Kit turns ChemQuik® or general purpose (HFC or NSH) couplings into a dip-tube that can easily be threaded into the 3/4" female NPS port of common drum closures. It provides a simple and inexpensive way to dispense chemicals in pumped systems. For your convenience, CPC offers a variety of drum adaptor plugs to facilitate easy drum connections. (See plugs and caps on page 149.)



PART NUMBER	DESCRIPTION
DQUAKIT	Adaptor & DQPRODT1274 47" long dip-tube



Universal Drum Adaptor Kit
(shown with NSH Series)

Can be used with many standard CPC quick disconnect couplings and standard bung plugs and bottle caps

BottleQuik® 2-Port Kit UDA • POLYPROPYLENE

The BottleQuik® is intended for use on reagent bottles with SP400-38mm threads. It can be used in either the upright position or inverted and has two 3/8" female NPT ports for liquid and vent ports.

PART NUMBER	DESCRIPTION
DQUDACAP2PK11PP	2-Port adaptor CAP for 38mm SP400 bottles & dip-tubes, 1.75" (451mm) long, FKM o-ring, 3/8" female NPT liquid port, 3/8" female NPT vent port, 3/8" female NPT vent port. Use above kits with CQG, CQH and CQV Series couplings.

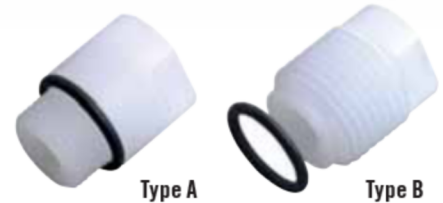


BottleQuik 2-Port UDA Bottle Adaptor Kit (shown with CQG and CQH)

DrumQuik Asian Drum Adaptors • POLYPROPYLENE

The DrumQuik® Asian drum adaptors allow ChemQuik® or general purpose (HFC or NSH) couplings to be easily connected to the unique threads common in many drum closures (with integral dip-tubes) manufactured in Asia, e.g., Kodama, Accelo, Stella, Dung Woo, etc. A 3/4" female NPT inner thread can accept any coupling or fitting with a 3/4" male NPT termination.

PART NUMBER	DESCRIPTION
DQADAPP0212 • TYPE A	Adaptor, FKM seals, 3/4" female NPT inner port x 3/4" NPS male thread to fit drum plug.
DQADAPP0622 • TYPE B	Adaptor, FKM seals, 3/4" female NPT inner port x 1-3/8" TYPE B male buttress thread to fit drum plug.



Type A
For use with closure plugs with a 3/4" NPS center port.

Type B
For use with closure plugs with a 1-3/8" buttress center port.

DrumQuik Plugs and Caps

For your convenience, CPC offers several sizes of common bung plugs and caps that have the internal 3/4" female NPS thread, into which the DrumQuik Universal Drum Adaptors/ChemQuik couplings are threaded.

PART NUMBER	DESCRIPTION
DQMBUNGPP2BUT12	Bung closure, polypropylene, EPDM o-ring, 2" buttress x 3/4" female NPS
DQMBUNGPP2NPS12	Bung closure, polypropylene, EPDM o-ring, 2" NPS x 3/4" female NPS
DQMBUNGPP56X412	Bung closure, polypropylene, EPDM o-ring, BCS56x4 x 3/4" female NPS
DQMBUNGPP70X612	Bung closure, polypropylene, EPDM o-ring, BCS70x6, 3/4" female NPS
DQMCAPP70mm	Cap closure, polypropylene, EPDM o-ring, 70mm x 3/4" female NPS
DQMCAPP63MM	Cap closure, polypropylene, EPDM o-ring, 63mm, 3/4" female NPS



3/4" NPT inner port incorporates a face seal to assure a leak-free connection.

All measurements are in inches (millimeters) unless otherwise noted. Tubing must meet stated inside and outside diameters. **NOTE:** The DQ UDA kits are designed to work with CPC couplings that have 3/4" NPT male terminations. The DQ UDA 3-Port kits are designed to work with a 1/2" NPT male on the liquid port and a 1/4" NPT male on the vent port. A 1/2" male NPT to 1/4" female NPT reducer bushing may be required to accommodate smaller NS4, PLC and PMC Series couplings. BottleQuik features two 3/8" female NPT ports. **NOTE:** DrumQuik Adaptors are intended for end-use applications not requiring compliance with UN/DOT standards for use in transportation of hazardous materials.



DQ UDA kits can be used with a wide range of closures.