

MAXIMATIC® SERIES SOLENOID-OPERATED VALVES

2-WAY, 3-WAY & 4-WAY VALVES

Available in 2-Way, 3-Way and 4-Way configurations in port sizes from #10-32 to 1/2" NPT. Select either a direct-acting poppet or solenoid-controlled pilot operated balanced spool design. Spool valves are body ported but can be bolted to a parallel circuit manifold. The 4-Way valves are also available in 3-position versions with either pressure center, closed center or exhaust center spool options.

Materials	Aluminum, stainless steel, thermoplastic
Max. Pressure	Spool Valves: 20 to 125 psig; Direct-Acting: 0 to 115 psig; MME-41 Series: 30 to 125 psig
Response Time	< 20 ms
Mounting	Manifold (standard), actuator (1/4") available
Manual Override	Locking or non-locking
Electrical Connection	DIN terminal with LED indicator, or 18" wire leads
DIN Connector	Plug-in electrical connector with LED, DIN 43650 Form "B" 3 mm screw; MME-31/41: DIN Industrial Form "C" (9.4 mm centers), 3 mm screw <i>Note: LED will not light if polarity is reversed</i>
Wire Leads	Not polarity sensitive
Temp. Range	32 to 150°F
Seals	Nitrile
More Details	clippard.com/link/max-solenoid



3-Way & 4-Way Valves

Port	Cv	Flow Rate	
		@ 50 psig	@ 100 psig
#10-32	0.58	450 l/min	760 l/min
1/8" NPT	0.67	510 l/min	880 l/min
1/4" NPT	0.89	740 l/min	1,400 l/min
3/8" NPT	1.68	1,400 l/min	2,600 l/min
1/2" NPT	2.79	2,600 l/min	4,800 l/min

- Small size makes valves ideal for use in compact applications
- Closed center, pressure center, and exhaust center models available

**MAXIMUM VALUE.
MAXIMUM PERFORMANCE.**

Choose either DIN connector with LED indicator or 18" wire lead connection. Both are rotatable and interchangeable.



Conforms to ISO 19973-2 test standards

Port sizes from #10-32 to 1/2" NPT

Easily accessible locking or non-locking manual override switch

All Maximatic® solenoid valves are IP 65 CE rating

Nitrile Seals

Standard models include a base that permits fast, secure mounting of electronic valves to a manifold for grouping in compact assemblies.

Operating ranges to 125 psig

Sturdy aluminum body withstands rough environments

MAXIMATIC® SERIES SOLENOID-OPERATED VALVES

ORDER GUIDE

ELECTRONIC VALVES



Single solenoid electronic valves mounted on 8-station manifold

Note: This numbering schematic is shown for illustration purposes only. All possible configurations are not available. For standard models, see the products illustrated in this catalog.

Valve Series Electronic Air Pilot	Enter E A	<input type="text"/>
Valve Type 2-Way (direct-acting only) 3-Way 4-Way	Enter 2 3 4	<input type="text"/>
Body/Port Size Direct-Acting 1/8" NPT 1/8" NPT Stacking 1/4" NPT Spool Type #10-32 1/8" NPT 1/4" NPT 1/4" NPT 3/8" NPT 1/2" NPT	Enter P S Q 1N 1P 2Q 3Q 3W 4Z	<input type="text"/>
Primary/Secondary Actuator Air/Air Air/Spring Electronic Pilot/Elec. Pilot Electronic Pilot/Spring Direct Acting/Spring	Enter AA AS EE ES DS (2- or 3-Way, #10-32, 1/8", 1/4" only)	<input type="text"/>
Mounting Standard Manifold Actuator*	Enter (blank) B	<input type="text"/>
Spool Type 2-Position, Spool 3-Position, Closed Center 3-Position, Exhaust Center 3-Position, Pressure Center	Enter (blank) C E P	<input type="text"/>
Electrical Connector DIN Connector Wire Leads (18")	Enter D W	<input type="text"/>
Voltage 12 VDC 24 VDC 24 VAC 110 VAC 220 VAC	Enter 012 024 24A 110 220	<input type="text"/>

* Only available on 3- or 4-Way electronic valves. 1/4" NPT actuator.

Only available on 4-Way valves with "AA" or "EE" actuator. Standard manifold mount only.

Only required on electronic valves

Only required on electronic valves

Example MM - -

MM E - 4 2Q ES - D 110

MAXIMATIC® SERIES SOLENOID-OPERATED VALVES

ORDER GUIDE

2-WAY VALVES

Series No.	Style	Ports		Exhaust	Function	Cv	Flow @ 100 psig
		Inlet	Outlet				
MME-2PDS	Poppet	1/8" NPT	1/8" NPT	1/8" NPT	2/2	0.12	190 l/min
MME-2QDS	Poppet	1/4" NPT	1/4" NPT	1/4" NPT	2/2	0.12	190 l/min
MME-2SDS	Poppet	1/8" NPT	1/8" NPT	1/8" NPT	2/2	0.05	65 l/min

3-WAY VALVES

MME-3PDS	Poppet	1/8" NPT	1/8" NPT	1/8" NPT	3/2	0.12	190 l/min
MME-3QDS	Poppet	1/4" NPT	1/4" NPT	1/4" NPT	3/2	0.12	190 l/min
MME-3SDS	Poppet	1/8" NPT	1/8" NPT	1/8" NPT	3/2	0.05	65 l/min
MME-31NES	Spool	#10-32	#10-32	#10-32	3/2 NC	0.58	760 l/min
MME-31PES	Spool	1/8" NPT	1/8" NPT	1/8" NPT	3/2 NC	0.67	880 l/min
MME-32QES	Spool	1/4" NPT	1/4" NPT	1/8" NPT	3/2 NC	0.89	1,400 l/min
MME-33WES	Spool	3/8" NPT	3/8" NPT	1/4" NPT	3/2 NC	1.68	2,600 l/min
MME-34ZES	Spool	1/2" NPT	1/2" NPT	1/2" NPT	3/2 NC	2.79	4,800 l/min
MME-31NEE	Spool	#10-32	#10-32	#10-32	3/2	0.58	760 l/min
MME-31PEE	Spool	1/8" NPT	1/8" NPT	1/8" NPT	3/2	0.67	880 l/min
MME-32QEE	Spool	1/4" NPT	1/4" NPT	1/8" NPT	3/2	0.89	1,400 l/min
MME-33WEE	Spool	3/8" NPT	3/8" NPT	1/4" NPT	3/2	1.68	2,600 l/min
MME-34ZEE	Spool	1/2" NPT	1/2" NPT	1/2" NPT	3/2	2.79	4,800 l/min

4-WAY VALVES

Series No.	Style	Inlet	Ports Outlet	Exhaust	Function	Cv	Flow @ 100 psig	Spool Configuration		
								Closed Center	Exhaust Center	Pressure Center
MME-41NES	Spool	#10-32	#10-32	#10-32	5/2	0.58	760 l/min			
MME-41PES	Spool	1/8" NPT	1/8" NPT	1/8" NPT	5/2	0.67	880 l/min			
MME-42QES	Spool	1/4" NPT	1/4" NPT	1/8" NPT	5/2	0.89	1,400 l/min			
MME-43WES	Spool	3/8" NPT	3/8" NPT	1/4" NPT	5/2	1.68	2,600 l/min			
MME-44ZES	Spool	1/2" NPT	1/2" NPT	1/2" NPT	5/2	2.79	4,800 l/min			
MME-41NEE	Spool	#10-32	#10-32	#10-32	5/2	0.58	760 l/min			
MME-41PEE	Spool	1/8" NPT	1/8" NPT	1/8" NPT	5/2	0.67	880 l/min			
MME-42QEE	Spool	1/4" NPT	1/4" NPT	1/8" NPT	5/2	0.89	1,400 l/min			
MME-43WEE	Spool	3/8" NPT	3/8" NPT	1/4" NPT	5/2	1.68	2,600 l/min			
MME-44ZEE	Spool	1/2" NPT	1/2" NPT	1/2" NPT	5/2	2.79	4,800 l/min			
MME-41NEEC	Spool	#10-32	#10-32	#10-32	5/3	0.50	650 l/min	•		
MME-41PEEC	Spool	1/8" NPT	1/8" NPT	1/8" NPT	5/3	0.50	650 l/min	•		
MME-42QEEC	Spool	1/4" NPT	1/4" NPT	1/8" NPT	5/3	0.67	1,400 l/min	•		
MME-43WEEC	Spool	3/8" NPT	3/8" NPT	1/4" NPT	5/3	1.00	2,000 l/min	•		
MME-44ZEEC	Spool	1/2" NPT	1/2" NPT	1/2" NPT	5/3	1.68	2,600 l/min	•		
MME-41NEEP	Spool	#10-32	#10-32	#10-32	5/3	0.50	650 l/min			•
MME-41PEEP	Spool	1/8" NPT	1/8" NPT	1/8" NPT	5/3	0.50	650 l/min			•
MME-42QEEP	Spool	1/4" NPT	1/4" NPT	1/8" NPT	5/3	0.89	1,400 l/min			•
MME-43WEEP	Spool	3/8" NPT	3/8" NPT	1/4" NPT	5/3	1.00	2,000 l/min			•
MME-44ZEEP	Spool	1/2" NPT	1/2" NPT	1/2" NPT	5/3	1.68	2,600 l/min			•
MME-41NEEE	Spool	#10-32	#10-32	#10-32	5/3	0.50	650 l/min		•	
MME-41PEEE	Spool	1/8" NPT	1/8" NPT	1/8" NPT	5/3	0.50	650 l/min		•	
MME-42QEEE	Spool	1/4" NPT	1/4" NPT	1/8" NPT	5/3	0.89	1,400 l/min		•	
MME-43WEEE	Spool	3/8" NPT	3/8" NPT	1/4" NPT	5/3	1.00	2,000 l/min		•	
MME-44ZEEE	Spool	1/2" NPT	1/2" NPT	1/2" NPT	5/3	1.68	2,600 l/min		•	

MAXIMATIC® SERIES SOLENOID-OPERATED VALVES

2-WAY & 3-WAY 2-POSITION VALVES



MME-2SDS-D024

Maximatic direct-acting valves are single solenoid spring return, poppet type valves; available as either 2-Way or 3-Way configurations in 1/8" and 1/4" NPT port sizes. Hardware to stack multiple valves is included with each stacking valve (MME-3SDS and MME-2SDS). Includes two long screws, two short screw, one gasket, and two nuts. Coil included.

2-WAY OR 3-WAY DIRECT-ACTING

Medium	Air (40 micron filtration), inert gas or liquid
Operating Range	0 to 115 psig
Flow	65 l/min @ 100 psig
Electrical Connection	DIN connector with LED indicator (D) or 18" wire lead (W)
Voltage	12 VDC (012), 24 VDC (024), 24 VAC (24A), 110 VAC (110), or 220 VAC (220)
Power Consumption	6.5 watts
Number of Ports	2 or 3
Mounting	Body ported or stacking

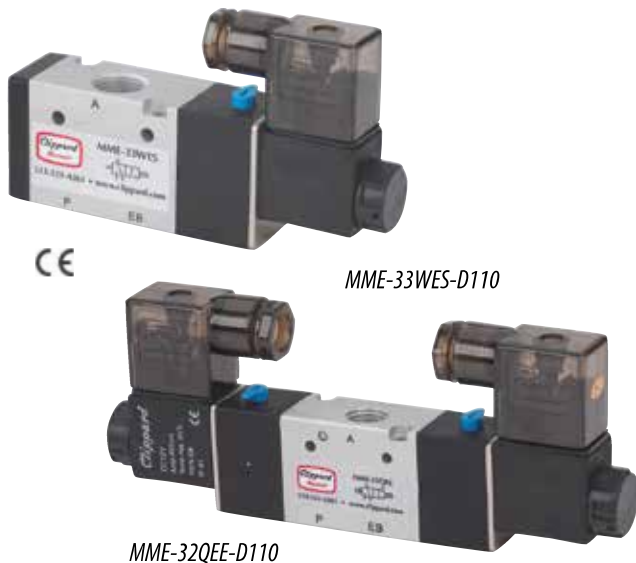
Replacement stacking kits are available which include two long screws, two short screws, one gasket and two nuts.

Part No.	Description
27048	Replacement Stacking Kit

2-Way Valves	l/min*	3-Way Valves	Inlet	Outlet	Exhaust	l/min*	Coil Part No. ²
MME-2PDS-□□	190	MME-3PDS-□□	1/8" NPT	1/8" NPT	#10-32	65	27065-□□
MME-2SDS-□□ ¹	71	MME-3SDS-□□ ¹	1/8" NPT	1/8" NPT	#10-32	65	27065-□□
MME-2QDS-□□	190	MME-3QDS-□□	1/4" NPT	1/4" NPT	#10-32	65	27065-□□

Add electrical connection and voltage choices to the end of each base part number—**Example:** MME-2QDS-W220

*Based on flow @ 100 psig; ¹Stacking valve; ²Refer to Replacement Coil Chart, p. 51



MME-33WES-D110

MME-32QEE-D110

3-WAY SINGLE OR DOUBLE SOLENOID

Maximatic 3-Way electronic valves are either Normally-Closed single solenoid spring return, or double solenoid spool valves in #10-32 to 1/2" NPT port sizes.

Medium	Air (40 micron filtration) or inert gas
Operating Range	20 to 125 psig
Electrical Connection	DIN connector with LED indicator (D) or 18" wire lead (W)
Voltage	12 or 24 VDC (012 or 024), 24 VAC (24A), 110 VAC (110), or 220 VAC (220)
Number of Ports	3
Mounting	Body ported, manifold mount, actuator (1/4" NPT only) or NAMUR (3/8" NPT only) available
Manual Override	Non-locking on MME-31 Series; locking on all others
Power Consumption	2.5 watts on MME-31 series; 3 watts for all others

Single Solenoid Valves	Double Solenoid Valves	Inlet	Outlet	Exhaust	l/min*	Coil Part No. ²
MME-31NES-□□	MME-31NEE-□□	#10-32	#10-32	#10-32	760	27001-□□
MME-31PES-□□	MME-31PEE-□□	1/8" NPT	1/8" NPT	1/8" NPT	880	27001-□□
MME-32QES-□□	MME-32QEE-□□	1/4" NPT	1/4" NPT	1/4" NPT	1,400	27065-□□
MME-33WES-□□	MME-33WEE-□□	3/8" NPT	3/8" NPT	3/8" NPT	2,600	27065-□□
MME-34ZES-□□	MME-34ZEE-□□	1/2" NPT	1/2" NPT	1/2" NPT	4,800	27065-□□

Add electrical connection and voltage choices to the end of each base part number—**Example:** MME-34ZEE-W024

*Based on flow @ 100 psig; ²Refer to Replacement Coil Chart, p. 51

MAXIMATIC® SERIES SOLENOID-OPERATED VALVES

4-WAY 2-POSITION & 3-POSITION VALVES



4-WAY 2-POSITION, SINGLE OR DOUBLE SOLENOID

Maximatic 4-Way solenoid controlled, pilot operated valves are either single solenoid spring return or double solenoid spool valves in #10-32 thread to 1/2" NPT port sizes. Coil included.

Operating Range	20 to 125 psig
Electrical Connection	DIN connector with LED indicator (D) or 18" wire leads (W)
Voltage	12 VDC (012), 24 VDC (024), 24 VAC (24A), 110 VAC (110), or 220 VAC (220)
Number of Ports	5
Mounting	Body ported, manifold mount
Manual Override	Non-locking on MME-41 models; locking on all others
Power Consumption	2.5 watts on MME-41 models; 3 watts for all others

Single Solenoid Valves	Double Solenoid Valves	Inlet	Outlet	Exhaust	l/min*	Coil Part No. ²
MME-41NES-□□	MME-41NEE-□□	#10-32	#10-32	#10-32	27	27001-□□
MME-41PES-□□	MME-41PEE-□□	1/8" NPT	1/8" NPT	1/8" NPT	31	27001-□□
MME-42QES-□□	MME-42QEE-□□	1/4" NPT	1/4" NPT	1/8" NPT	49	27065-□□
MME-43WES-□□	MME-43WEE-□□	3/8" NPT	3/8" NPT	1/4" NPT	93	27065-□□
MME-44ZES-□□	MME-44ZEE-□□	1/2" NPT	1/2" NPT	1/2" NPT	171	27065-□□

Add electrical connection and voltage choices to the end of each base part number—**Example:** MME-43WEE-D110

*Based on flow @ 100 psig; ²Refer to Replacement Coil Chart, p. 51

4-WAY 3-POSITION, DOUBLE SOLENOID

Operating Range	30 to 125 psig MME-41 Series; 20 to 125 psig all others
Electrical Connection	DIN connector with LED indicator (D) or 18" wire leads (W)
Voltage	12 VDC (012), 24 VDC (024), 24 VAC (24A), 110 VAC (110), or 220 VAC (220)
Number of Ports	5
Mounting	Body ported, manifold mount
Manual Override	Non-locking on MME-41 series; locking on all others
Power Consumption	2.5 watts on MME-41 models; 3 watts for all others

Maximatic 4-Way double solenoid spring centered valves with closed center, pressure center or exhaust center spools are available from #10-32 thread to 1/2" NPT port sizes. Coil included.



Closed Center	Pressure Center	Exhaust Center	Inlet	Outlet	Exhaust	l/min*	Coil Part No. ²
MME-41NEEC-□□	MME-41NEEP-□□	MME-41NEEE-□□	#10-32	#10-32	#10-32	650	27001-□□
MME-41PEEC-□□	MME-41PEEP-□□	MME-41PEEE-□□	1/8" NPT	1/8" NPT	1/8" NPT	650	27001-□□
MME-42QEEC-□□	MME-42QEEP-□□	MME-42QEEE-□□	1/4" NPT	1/4" NPT	1/8" NPT	1,400	27065-□□
MME-43WEEC-□□	MME-43WEEP-□□	MME-43WEEE-□□	3/8" NPT	3/8" NPT	1/4" NPT	2,000	27065-□□
MME-44ZEEC-□□	MME-44ZEEP-□□	MME-44ZEEE-□□	1/2" NPT	1/2" NPT	1/2" NPT	2,600	27065-□□

Add electrical connection and voltage choices to the end of each base part number—**Example:** MME-41PEEP-W024

*Based on flow @ 100 psig; ²Refer to Replacement Coil Chart, p. 51

MAXIMATIC® SERIES SOLENOID-OPERATED VALVES

CONNECTORS, REPLACEMENT COILS & MANIFOLDS

DIN CONNECTORS

DIN 43650 Form B connectors with 11 mm spade center spacing. DIN type size 2, 3, and 4 Maximatic valves. Industrial Form connectors with 9.4 mm spade center spacing are designed to connect to 15mm terminal coils. Both are available with or without surge suppression and PVC molded three-wire cord set.



Form B Part No.	Industrial Form Part No.	Volts	LED	Cord
CC-B	CC-I			-
CC-B-P6	CC-I-P6	6-240	no	6'
CC-B-P15	CC-I-P15			15'
CC-BLL	CC-ILL			-
CC-BLL-P6	CC-ILL-P6	6-24	yes	6'
CC-BLL-P15	CC-ILL-P15			15'
CC-BLM	CC-ILM			-
CC-BLM-P6	CC-ILM-P6	48-110	yes	6'
CC-BLM-P15	CC-ILM-P15			15'
CC-BLH				-
CC-BLH-P6		208-240	yes	6'
CC-BLH-P15				15'

REPLACEMENT COILS

Replacement coils for solenoid valves are available in voltages from 12 VDC to 220 VAC with either DIN connector or 18" wire leads.

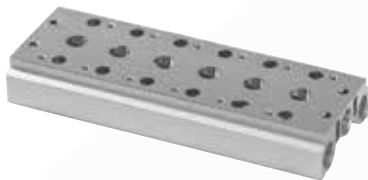
Description	2.5 Watt	3.0 Watt	6.5 Watt
	#10-32 & 1/8"	1/4", 3/8" & 1/2"	Direct-Acting
For Use with DIN Connectors	MME-31/41	MME-32-44	MME-2
12 VDC	27001-D012	27065-D012	27002-D012
24 VDC	27001-D024	27065-D024	27002-D024
110 VAC	27001-D110	27065-D110	27002-D110
220 VAC	27001-D220	27065-D220	27002-D220
24 VAC	27001-D24A	27065-D24A	27002-D24A
Wire Leads			
12 VDC	27001-W012	27065-W012	27002-W012
24 VDC	27001-W024	27065-W024	27002-W024
110 VAC	27001-W110	27065-W110	27002-W110
220 VAC	27001-W220	27065-W220	27002-W220
24 VAC	27001-W24A	27065-W24A	27002-W24A



Industrial Form, 2.5 W
#10-32 & 1/8"

Form B, 3.0 W
1/4", 3/8" & 1/2"

Form B, 6.5 W
Direct-Acting



PARALLEL BAR MANIFOLDS

Parallel circuit manifold bars are supplied with mounting screws and gaskets. Spare kits are also available which include two screws and a gasket. Blank plate supplied with one gasket, two screws and metal plate.

Valve Series	Manifold Inlet/ Exhaust	Blank Plate	2-Station	4-Station	6-Station	8-Station	16-Station
3-Way Valve Manifolds							
MME-31	1/8"	MMM-31-B	MMM-31-02	MMM-31-04	MMM-31-06	MMM-31-08	MMM-31-16
MME-32	1/4"	MMM-32-B	MMM-32-02	MMM-32-04	MMM-32-06	MMM-32-08	MMM-32-16
MME-33	3/8"	MMM-33-B	MMM-33-02	MMM-33-04	MMM-33-06	MMM-33-08	MMM-33-16
MME-34	1/2"	MMM-34-B	MMM-34-02	MMM-34-04	MMM-34-06	MMM-34-08	MMM-34-16

3-Way Spare Mounting Kit Hardware

27041-31	Hardware Kit for MME-31 Series Valves	27041-33	Hardware Kit for MME-33 Series Valves
27041-32	Hardware Kit for MME-32 Series Valves	27041-34	Hardware Kit for MME-34 Series Valves

Valve Series	Manifold Inlet/ Exhaust	Blank Plate	2-Station	4-Station	6-Station	8-Station	16-Station
4-Way Valve Manifolds							
MME-41	1/8"	MMM-41-B	MMM-41-02	MMM-41-04	MMM-41-06	MMM-41-08	MMM-41-16
MME-42	1/4"	MMM-42-B	MMM-42-02	MMM-42-04	MMM-42-06	MMM-42-08	MMM-42-16
MME-43	3/8"	MMM-43-B	MMM-43-02	MMM-43-04	MMM-43-06	MMM-43-08	MMM-43-16
MME-44	1/2"	MMM-44-B	MMM-44-02	MMM-44-04	MMM-44-06	MMM-44-08	MMM-44-16

4-Way Spare Mounting Kit Hardware

27041-41	Hardware Kit for MME-41 Series Valves	27041-43	Hardware Kit for MME-43 Series Valves
27041-42	Hardware Kit for MME-42 Series Valves	27041-44	Hardware Kit for MME-44 Series Valves